

Kalfsvlees • Viande de veau  
Kalbfleisch • Veal  
Carne di vitello • Carne de ternera



[www.belgianmeat.com](http://www.belgianmeat.com)

**V L A M**

Belgisch kalfsvlees uit Vlaanderen

Viande de veau belge de Flandre

Belgisches Kalbfleisch aus Flandern

Belgian veal from Flanders

Carne di vitello belga de Flandes

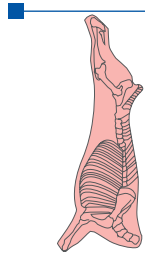
Carne di ternera belga de Flandria







# K 101

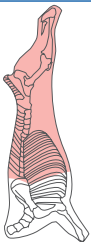


- Karkas
- Carcasse
- Karkasse
- Carcass
- Carcassa
- Canal





## K 201



Achterspan: U, R, O-klassificatie met lappen  
Pan double: U, R, O-classification avec flanchets  
Hinterteil: U, R, O-Klassifizierung mit Lappen  
Hinds and ends: U, R, O-classification flanks-on  
Sella: U, R, O-classificazione con pancia  
Trasero doble: U, R, O-clasificación con falda



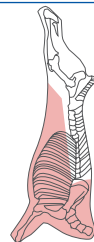
## K 301

Pistola dubbel  
Pan double, coupe pistolet  
Pistole  
Hinds and ends, Pistola  
Sella  
Pistola doble

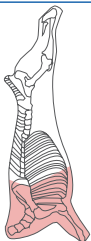


## K 401

Voorvoet met lap  
Basse de veau avec flanchet  
Vorderteil mit Lappen  
Forequarter unsplit flank-on  
Busto con pancia  
Delantero doble con falda



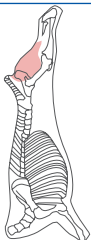
## K 402



Voorvoet zonder lap  
Basse de veau sans flanchet  
Vorderteil ohne Lappen  
Forequarter unsplit flank-off  
Busto senza pancia  
Delantero doble sin falda



## K 403



Voorvoet zonder borst  
Basse de veau sans poitrine  
Vorderteil ohne Brust  
Forequarter unsplit without breast  
Busto senza petto  
Delantero doble sin pecho





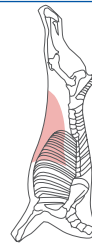
## K 501

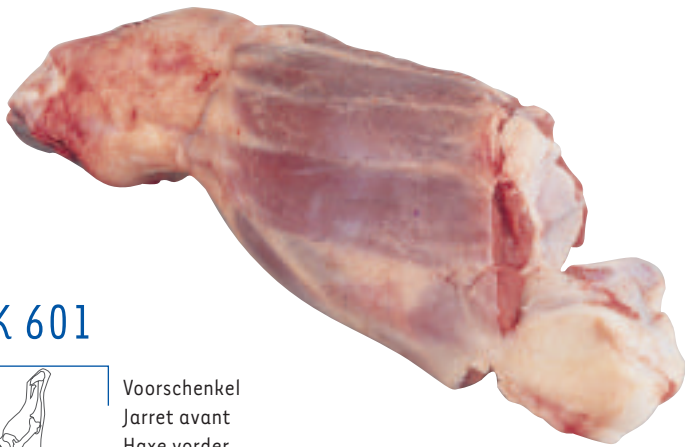
Vang met been  
Flanchet avec os  
Lappen mit Knochen  
Flank bone-in  
Pancia con osso  
Falda con hueso



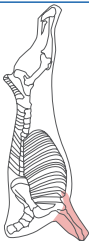
## K 502

Vang zonder been  
Flanchet sans os  
Lappen ohne Knochen  
Flank deboned  
Pancia senza osso  
Falda sin hueso





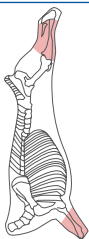
K 601



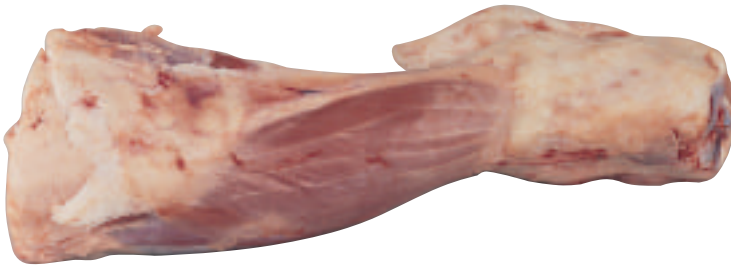
Voorschenkel  
Jarret avant  
Haxe vorder  
Shank forequarter  
Muscolo anteriore  
Morcillo delantero



K 602



Osso bucco  
Osso bucco  
Osso bucco  
Osso bucco  
Osso bucco  
Osso bucco



K 603

Achterschenkel  
Jarret arrière  
Haxe hinter  
Shank hindquarter  
Muscolo posteriore  
Morcillo trasero



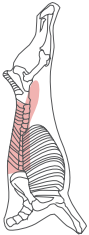
K 604

Schenkel achter, kort  
Jarret arrière, court  
Haxe hinter, kurz  
Shank hindquarter, short  
Muscolo posteriore, corto  
Morcillo trasero, corto





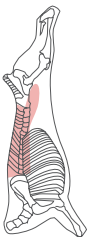
## K 701



Rug met been dubbel  
Carré avec os double  
Rücken mit Knochen  
Loin bone-in double  
Lombata con osso  
Lomo con hueso



## K 702



Rug met been enkel  
Carré avec os simple  
Rücken mit Knochen  
Loin bone-in single  
Lombata con osso  
Lomo con hueso





K 703

Rug uitgebeend  
 Carré désossé  
 Rücken ohne Knochen  
 Loin boneless  
 Lombata disossata  
 Lomo deshuesado



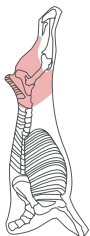
K 801

Viersnit uitgebeend (bovenbil, plattebil, kleinhoofd, groothoofd)  
 Cuisse désossée (noix, sous-noix, quasi, noix patissière)  
 Viererschnitt ohne Knochen (Oberschale, Unterschale, Hüfte, Kugel)  
 Haunch deboned (topside, silverside, rump, knuckle)  
 Coscia disossata (fesa, sottofesa, scamone, noce)  
 Pierna deshuesada (tapa, contra, cadera, babilla)





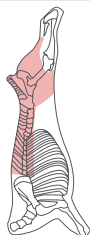
## K 802



Viersnit uitgebeend PAT (bovenbil, plattebil, kleinhoofd, groothoofd)  
Cuisse désossée PAD (noix, sous-noix, quasi, noix patissière)  
Vierschnitt ohne Knochen PAT (Oberschale, Unterschale, Hüfte, Kugel)  
Haunch deboned PAT (topside, silverside, rump, knuckle)  
Coscia disossata PAD (fesa, sottofesa, scamone, noce)  
Pierna deshuesada PAD (tapa, contra, cadera, babilla)



## K 901



Achterkwartier uitgebeend: bovenbil, plattebil, kleinhoofd, groothoofd, rug, muis, filet (zevensnit)  
Quartier arrière désossé: noix, sous-noix, quasi, noix patissière, carré, ronde de gîte, filet  
Hinterviertel Schier: Oberschale, Unterschale, Hüfte, Kugel, Rücken, Seemerrolle, filet  
Hindquarter deboned: topside, silverside, rump, knuckle, loin, eye-round, filet  
Quarto posteriore disossato: fesa, sottofesa, scamone, noce, lombata, girello, (magatello), filetto  
Cuarto trasero deshuesado: tapa, contra, cadera, babilla, lomo, redondo, solomillo



## K 1001

Bovenbil  
Noix  
Oberschale  
Topside  
Fesa  
Tapa



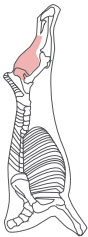
## K 1002

Bovenbil PAT  
Noix PAD  
Oberschale PAT  
Topside PAT  
Fesa PAD  
Tapa PAD





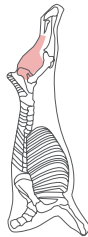
## K 1003



Plattebil  
Sous-noix  
Unterschale  
Silverside  
Sottofesa  
Contra



## K 1004



Plattebil PAT  
Sous-noix PAD  
Unterschale PAT  
Silverside PAT  
Sottofesa PAD  
Contra PAD



## K 1005

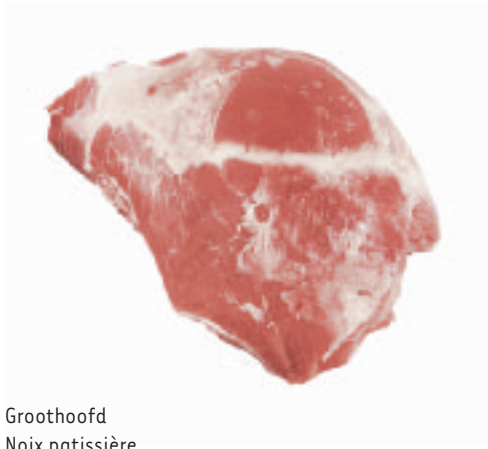
Kleinhoofd  
Quasi  
Hüfte  
Rump  
Scamone  
Cadera



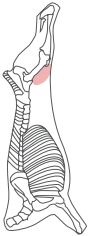
## K 1006

Kleinhoofd PAT  
Quasi PAD  
Hüfte PAT  
Rump PAT  
Scamone PAD  
Cadera PAD





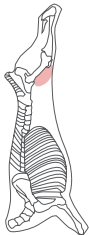
K 1007



Groothoofd  
Noix patissière  
Kugel  
Knuckle  
Noce  
Babilla



K 1008

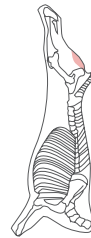


Groothoofd PAT  
Noix patissière PAD  
Kugel PAT  
Knuckle PAT  
Noce PAD  
Babilla PAD



K 1009

Muis  
Rond de gîte  
Seemerrolle  
Eye-round  
Girello (magatello)  
Redondo



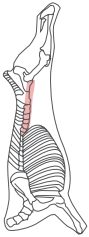
K 1010

Muis PAT  
Rond de gîte PAD  
Seemerrolle PAT  
Eye-round PAT  
Girello (magatello) PAD  
Redondo PAD





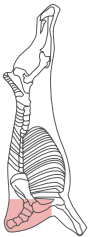
## K 1011



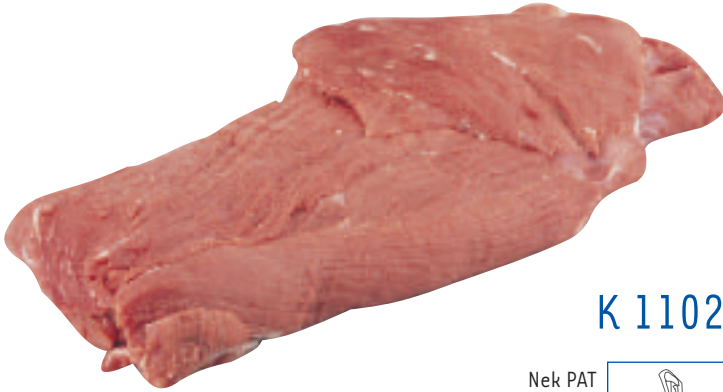
Filet  
Filet  
Filet  
Filet  
Filetto  
Solomillo



## K 1101

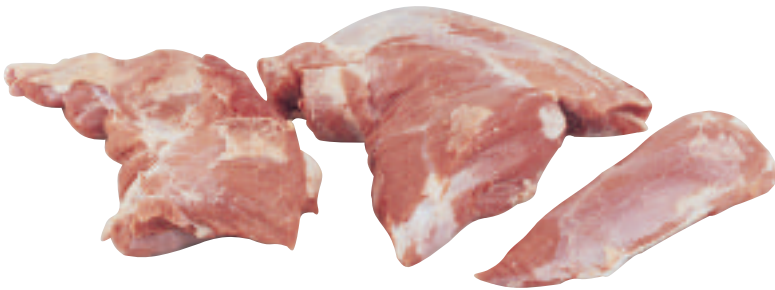


Nek uitgebeend  
Bas de carré (collier) désossé  
Nacken ohne Knochen  
Neck boneless  
Reale (coppa) disossato  
Cuello sin hueso



K 1102

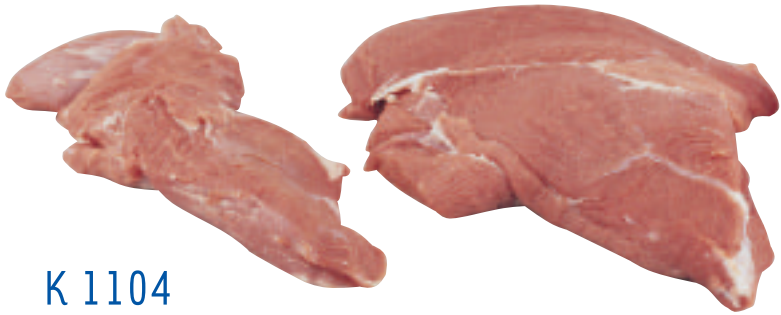
Nek PAT  
Bas de carré (collier) PAD  
Nacken PAT  
Neck PAT  
Reale (coppa) PAD  
Cuello PAD



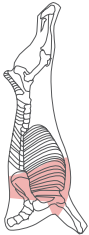
K 1103

Schouder uitgebeend  
Epaule désossée  
Schulter ohne Knochen  
Shoulder boneless  
Spalla disossata  
Espaldilla sin hueso





## K 1104



Schouder PAT  
Epaule PAD  
Schulter PAT  
Shoulder PAT  
Spalla PAD  
Espaldilla PAD



## K 1105



Borst uitgebeend  
Poirine désossée  
Brust ohne Knochen  
Brisket boneless  
Petto disossato  
Pecho sin hueso



K 1106

Borst PAT  
Poirine PAD  
Brust PAT  
Brisket PAT  
Petto PAD  
Pecho PAD



K 1201

Lever  
Foie  
Leber  
Liver  
Fegato  
Higado



K 1202

Hart  
Cœur  
Herz  
Heart  
Cuore  
Corazón



K 1203

Nier met niervet  
Rognon avec grasse  
Niere mit Fett  
Kidney with fat  
Rognone con grasso  
Riñones con grasa



K 1204

Nier  
Rognon  
Niere  
Kidney  
Rognone  
Riñones



K 1205

Zwezerik  
Ris  
Bries  
Sweetbreads  
Animelle  
Mollejas



K 1206

Hersenen  
Cervelle  
Hirn  
Brains  
Cervello  
Sesos



K 1207

Longhaas  
Onglet  
Nierenzapfen  
Body (thick) skirt  
Lombatello  
Entraña



K 1208

Omloop  
Hampe  
Zwerchfell enthäutet  
Thin skirts  
Lombatello sottile  
Músculos del diafragma



K 1209

Poten  
Pieds  
Füße  
Feet  
Piedini  
Patas

## K 1210



Kop  
Tête  
Kopf  
Head  
Testina  
Cabeza



## K 1211



Staat  
Queue  
Schwanz  
Tail  
Coda  
Rabo





K 1212

Tong  
Langue  
Zunge  
Tongue  
Lingua  
Lengua



K 1301

Trimming  
Petite viande  
Abschnitte  
Trimming  
Carnetta  
Recortes





**Promotiedienst:**  
**Service de promotion:**  
**Absatzförderung:**  
**Promotion Offices:**  
**Ufficio di promozione:**  
**Oficina de promoción:**

**VLAM - BELGIAN MEAT OFFICE**  
**(Flanders' Agricultural Marketing Board - Belgian Meat Office)**  
Leuvenseplein 4, B-1000 Brussels  
Belgium  
Tel.: + 32 2 510 63 20 - Fax: + 32 2 510 63 95  
E-mail: meatinfo@vlam.be  
Website: www.belgianmeat.com

**VLAM DEUTSCHLAND**  
**(Flanderns Agrar-Marketing-Büro)**  
Cäcilienstraße 46, D-50667 Köln  
Deutschland  
Tel.: + 49 221 25 48 57 - Fax: + 49 221 25 36 01  
E-mail: vlam.belg.agrar@t-online.de

**VLAM FRANCE**  
**(Office Flamand d'Agro-Marketing)**  
6, Rue Euler, 75008 Paris  
France  
Tel.: + 33 1 56 89 14 68 - Fax: + 33 1 56 89 14 69  
E-mail: vlam.paris@wanadoo.fr

**Nuttig adres:**  
**Adresse utile:**  
**Nützliche Adresse:**  
**Useful address:**  
**Indirizzo utile:**  
**Organismo gubernamental:**

**FAVV - A.F.S.C.A.**  
**l'Agence Fédérale pour la Sécurité de la Chaîne Alimentaire**  
**die Lebensmittelagentur**  
**Federal Agency for the Safety of the Food Chain**

WTC III - 8ème étage, 8th floor  
Bd. Simon Bolivar 30  
étage 21 - floor 21  
B-1000 Brussels  
Belgium  
Tel.: + 32 2 208 34 11 - Fax: + 32 2 208 38 66  
E-mail: info@afsca.be  
Website: www.favv.be

[www.belgianmeat.com](http://www.belgianmeat.com)

